

# Gallery

## Add Gallery

### 'State Admin'

Link: <http://www.aomsi.com/WebPages/adminlogin.aspx>

#### 1. Login



The screenshot shows the 'ADMIN LOGIN' page. At the top, there is a banner with the organization's logo on the left, the text 'ASSOCIATION OF ORAL AND MAXILLOFACIAL SURGEONS OF INDIA' in the center, and the Indian flag on the right. Below the banner is a white box with a blue border containing the login form. The form has two input fields: 'E-mail Id' with the value 'kamataka@aomsi.com' and 'Password' with three dots. There are 'Login' and 'Reset' buttons. Below the buttons is a checkbox labeled 'Stay Signed In !!!' and a link 'Forgot Password ? Click Here..'. At the bottom of the form, it says 'Copyright © 2011-2019 ADMST All Rights Reserved. Powered by A1 Logics'.

Figure 1.1

#### 2. Click On 'GALLERY'

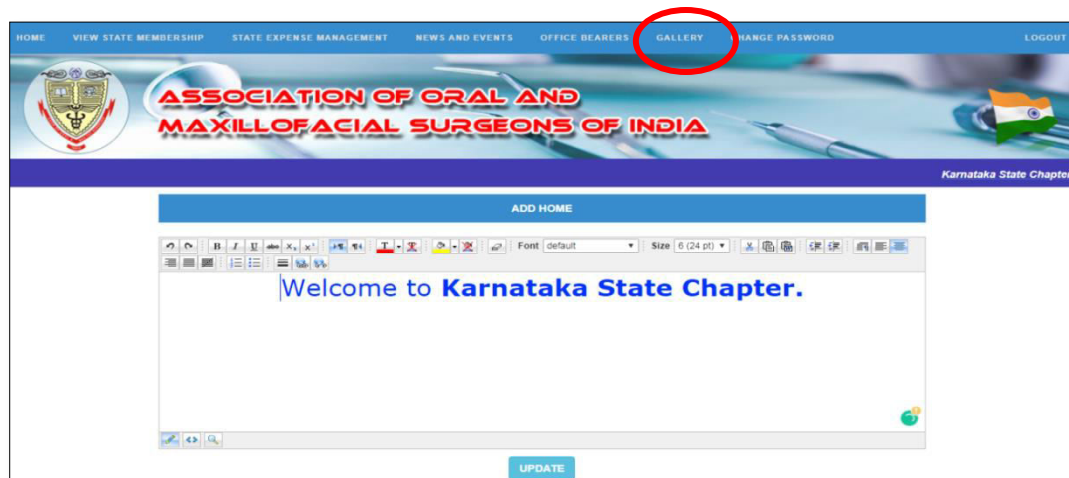


Figure 2.1

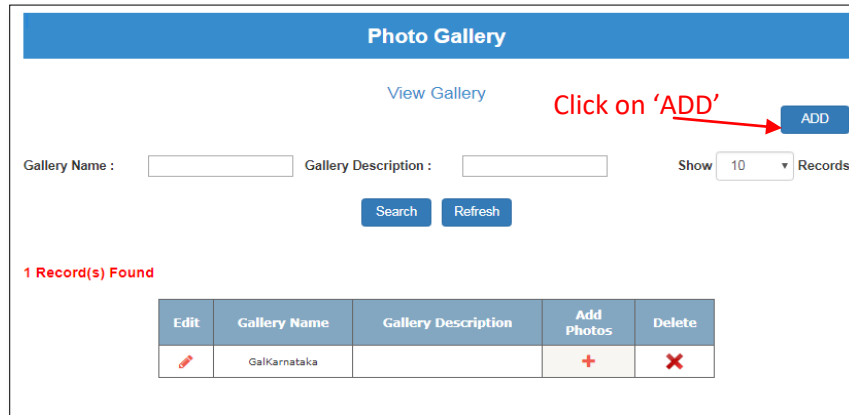


Figure 2.2

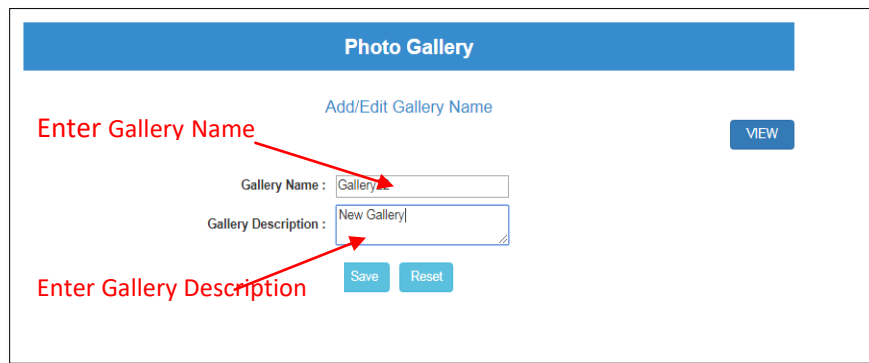


Figure 2.3



Figure 2.4

To create new gallery click on 'ADD' button as shown in Figure 2.2, Type gallery name and gallery description and click on 'Save' button as indicated in Figure 2.3, then a Pop-up message will appear as shown in Figure 2.4.

### 3. View Gallery

Photo Gallery

View Gallery

ADD

Gallery Name :  Gallery Description :  Show  Records

Search Refresh

2 Record(s) Found

| Edit | Gallery Name | Gallery Description | Add Photos | Delete |
|------|--------------|---------------------|------------|--------|
|      | Galkarnataka |                     | +          | ×      |
|      | Gallery22    | New Gallery         | +          | ×      |

Figure 3.1

After saving gallery, click on 'VIEW' button, to view your gallery name and description as shown in Figure 3.1

### 4. Add photos to Gallery

Photo Gallery

View Gallery

ADD

Gallery Name :  Gallery Description :  Show  Records

Search Refresh

2 Record(s) Found

| Edit | Gallery Name | Gallery Description | Add Photos | Delete |
|------|--------------|---------------------|------------|--------|
|      | Galkarnataka |                     | +          | ×      |
|      | Gallery22    | New Gallery         | +          | ×      |

Add Photo

Figure 4.1

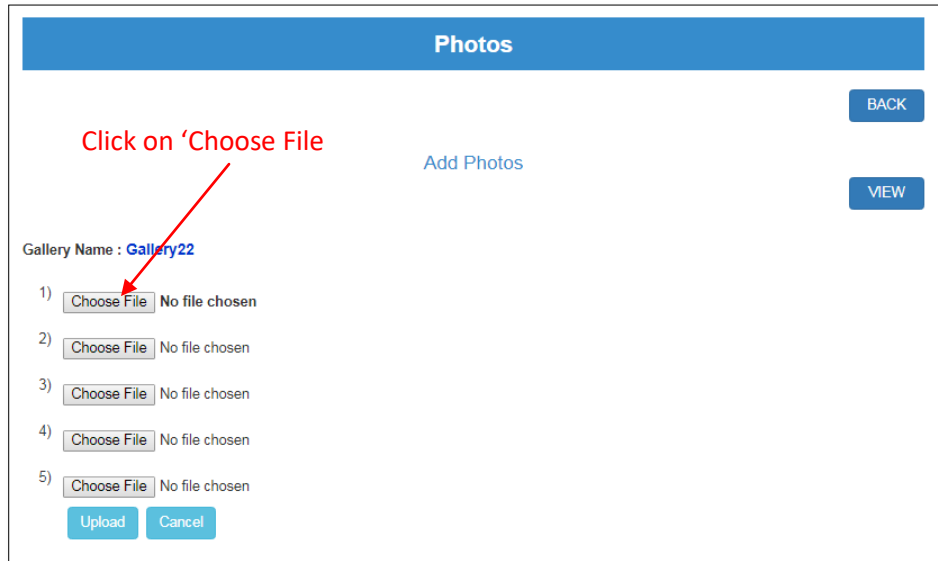


Figure 4.2

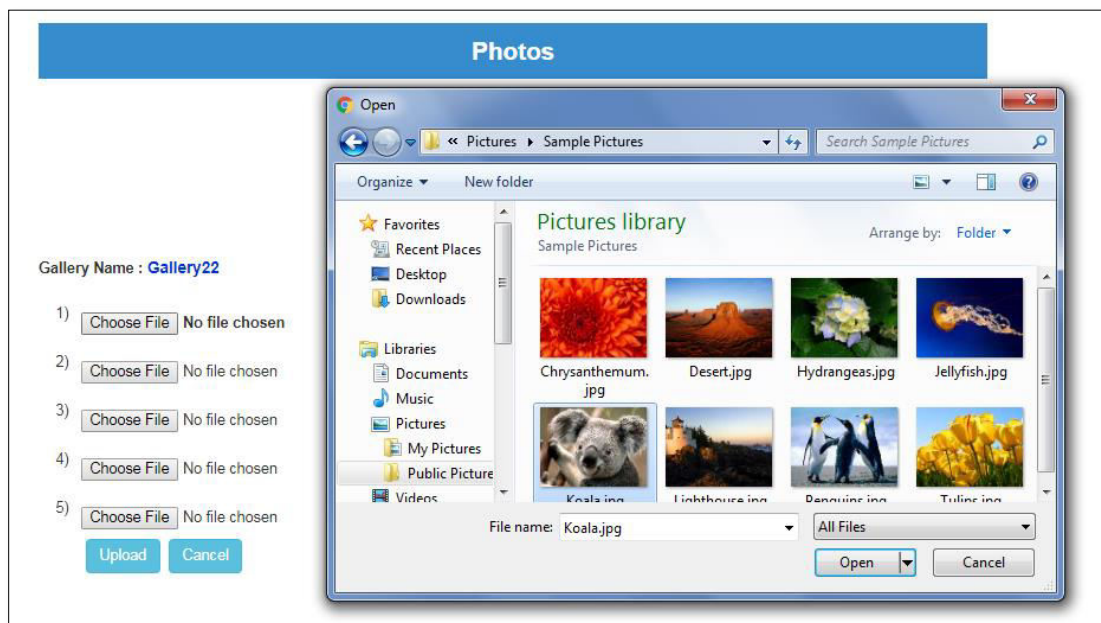
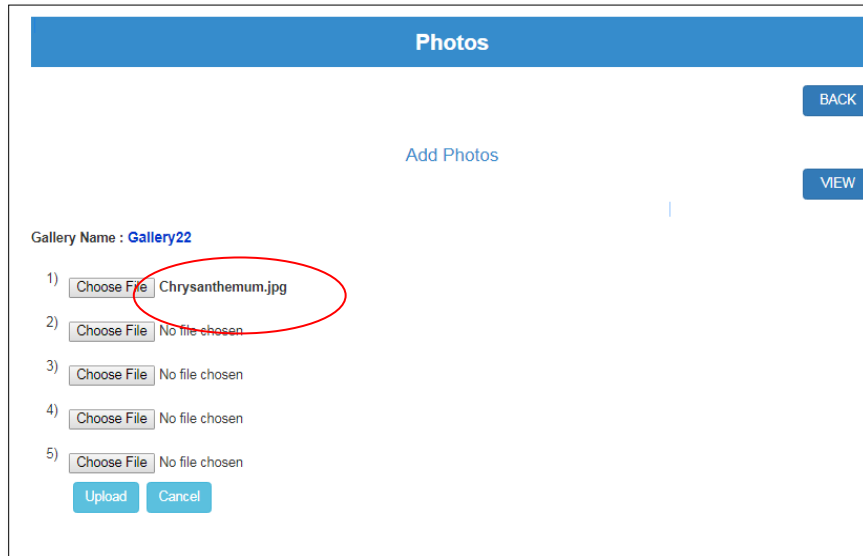


Figure 4.3

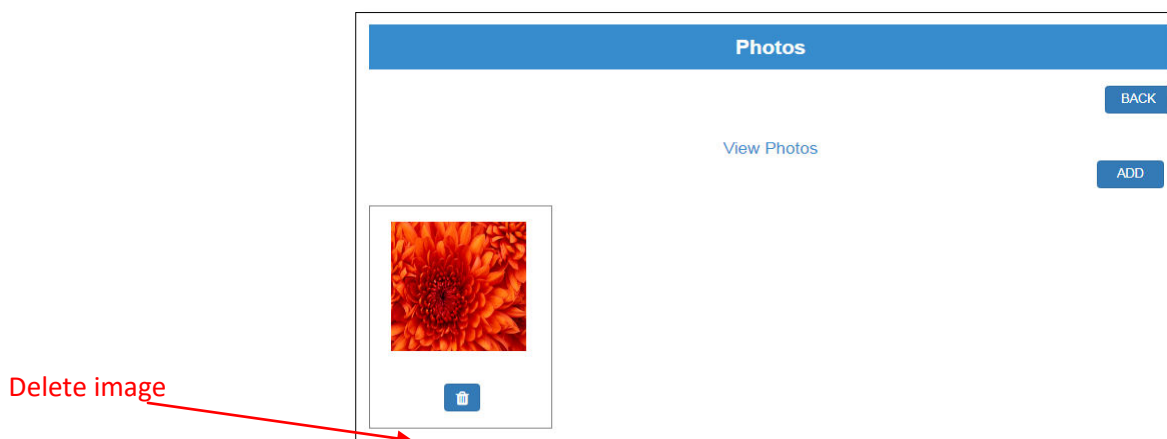


**Figure 4.4**

To add photos to gallery, click on ‘+’ icon of corresponding gallery as shown in Figure 4.1.

After that click on ‘Choose File’, then select picture to upload, click on ‘Upload’ button. Photo will be uploaded to your gallery.

## **5. View/Delete photos**



**Figure 5.1**

After uploading photos, if you click on ‘VIEW’ button, the uploaded image will appear as shown in Figure 5.1. You can delete images one by one on clicking ‘trash’ icon as shown in Figure 5.1

## 6. Search Gallery

Photo Gallery

View Gallery

ADD

Enter Gallery Name

Enter Gallery Description

Gallery Name :  Gallery Description :  Show 10 Records

Search Refresh

Click on 'Search'

1 Record(s) Found

| Edit | Gallery Name | Gallery Description | Add Photos | Delete |
|------|--------------|---------------------|------------|--------|
|      | Galkarnataka |                     | +          | ×      |

Figure 6.1

You can search gallery by gallery name or gallery description and click on 'Search' button as shown in Figure 6.1

## 7. Edit Gallery

Photo Gallery

View Gallery

ADD

Gallery Name :  Gallery Description :  Show 10 Records

Search Refresh

To Edit

2 Record(s) Found

| Edit | Gallery Name | Gallery Description | Add Photos | Delete |
|------|--------------|---------------------|------------|--------|
|      | Galkarnataka |                     | +          | ×      |
|      | Gallery22    | New Gallery         | +          | ×      |

Figure 7.1

**Figure 7.2**

To edit Gallery name, click on pencil button in the grid (Figure 7.1), type Gallery name which you want to update, and then click on ‘Update’ button.

## 8. Delete Gallery

| Edit | Gallery Name | Gallery Description | Add Photos | Delete |
|------|--------------|---------------------|------------|--------|
|      | GalKarnataka |                     | +          |        |
|      | Gallery22    | New Gallery         | +          |        |

**Figure 8.1**

You can delete your gallery by clicking on ‘X’ icon (Figure 8.1).

If the gallery doesn't contains photos you can delete gallery directly, otherwise you have to delete all the photos in the gallery as in the Figure 5.1

## [View Gallery](#)

### 1. Click on 'MEMBER INFO'

Link: <https://aomsi.com/WebPages/index.aspx>

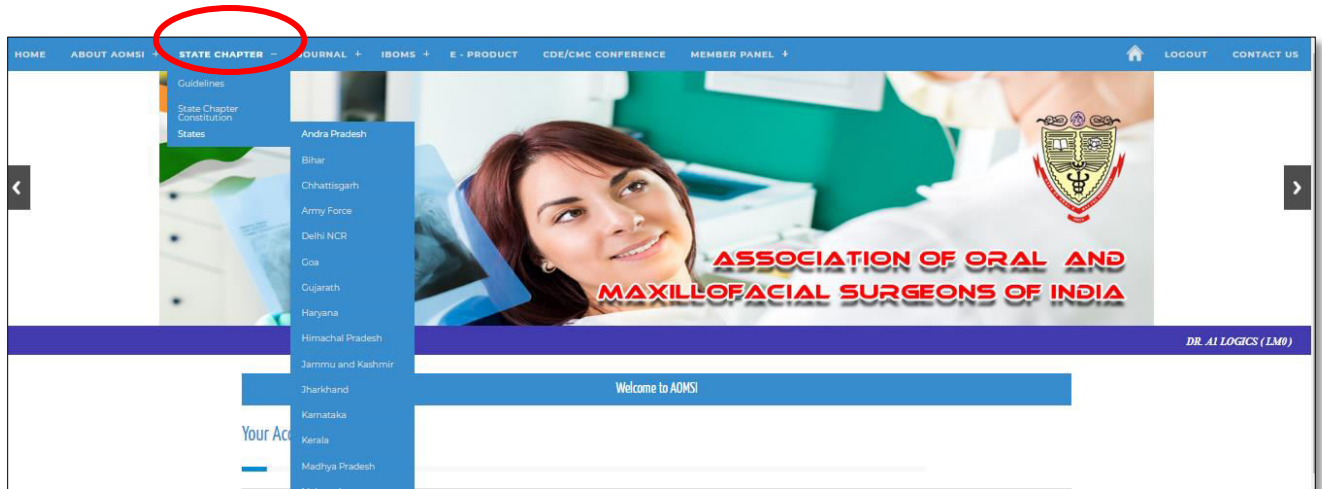


### 2. Login

Link: <http://www.aomsi.com/WebPages/login.aspx>



### 3. Click on 'STATE CHAPTER'



After clicking 'STATE CHAPTER' drop down will appear, choose states in the drop down to view the gallery.

### 4. Click on 'Gallery'

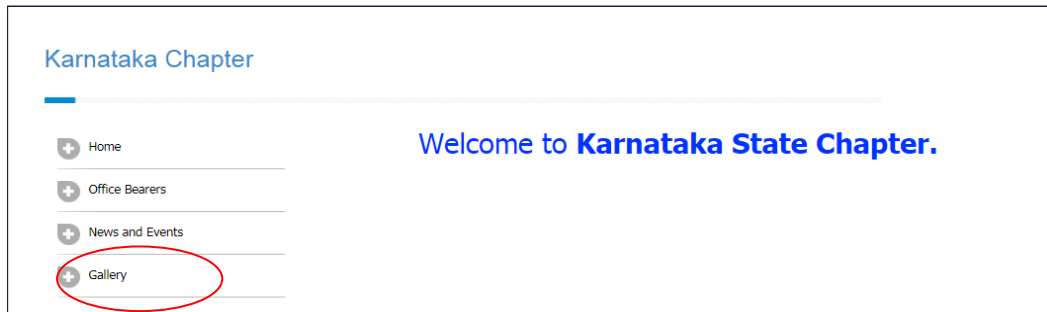


Figure 4.1



Figure 4.2

Click on 'Gallery' as mentioned in Figure 4.1, then the corresponding state gallery will be appearing as shown in Figure 4.2.